

# Yateley School Parents' Bulletin

**Issue:** 15

**Date:** 20<sup>th</sup> December 2019



[www.yateleyschool.net](http://www.yateleyschool.net)



@yateleyschool



@yateleyschool



[admin@yateley.hants.sch.uk](mailto:admin@yateley.hants.sch.uk)



School Lane, Yateley  
GU46 6NW



(01252) 879 222

**Learning together – Empowered for life.**

## Dear Parents

**Winter Concert** Once again, it was an absolute delight for our audience to see and hear the amazing musicians we have here at Yateley School. Wednesday evening's concert was a mixed programme of genres, groups and ages and with a common theme of excellence running throughout. The compering of Mr Hutton once again kept things moving and with humour. Mr Davies and the technical team were superb, as always. There were plenty of other staff either performing or behind the scenes and I am extremely grateful for what they do for music in the school. With a couple of hearty renditions of well known carols and full audience participation, a good time was had by all. I am indebted to Ms Pejovic for putting the programme together and for the many hours of rehearsals – that sort of standard comes with practice!



**Sixth Form** - From the Sixth Form, Mr Conway writes - Yateley Sixth Form never sleeps! We have had our Christmas Jumper Day, Christmas lunch, the Christmas quiz, the Christmas Party and we began interviews this week for students joining us in September, 2020. Not to mention Yr13 students receiving some brilliant offers from Universities: eight students have already received unconditional offers due to the strength of their application – we are incredibly proud of their achievements!

Last night saw our Sixth Form Christmas Party. It was great way to send our students off to the Christmas break after a hard term's work. It was a sold-out event with lots of fun, laughter and dancing.



We would like to wish you the happiest of holidays from everyone at Yateley Sixth Form.



Hampshire  
County Council



# Yateley School Parents' Bulletin

## End of term. Robin-in-da-Hood



As you might expect term came to an end with a bang rather than a whimper, with our staff pantomime for the students. After literally minutes of rehearsal, the dramatic skills came to the fore with a dubious performance of the Robin Hood story. With both deputy heads in drag and the jokes getting worse and more ad-libbed as the performances went on, a fun time was had by all (we hope!). Special thanks to Miss Hunt, Mr Davies and Miss Parish for scripts, costume make up, stage tech etc – all the things that covered up the actors' ineptitude.

We had the pleasure of celebrating (with pizza and cake) the achievements of our super Year 9s who have excelled themselves against their targets and made superb progress. The invite to join me for congratulations (and food) went to: Joshua Ashfield Carpenter, Alexander Bewick, Jasmine Brumage, Ben Cuninghame, Amelie Davis, Stephanie Hall, Lois Hassan, Nerys Ilott, Harriet Jacob, Rhys Jones, Rhys Owen, Nicola Sandu, Callum Scotford, Elise Setchfield, Maya Sharkey, Kiera Smith, Helena Sullivan, Oliver Turner, Kushal Vadicharla, Oliver Vegh.

I would like to thank parents for your many donations of toys and gifts to the Home from Home club. The donations have been absolutely amazing and so generous. Thank you very much and this will make a huge difference.



As parents of children in Year 7 to 9 will know from a previous bulletin and a SchoolComms we would be holding a Key Stage 3 parents' forum on the evening of Wednesday 8th January 2020, from 6-7pm to which you are warmly invited. The theme will be assessment and reporting, in particular the written reports which parents receive – at Key Stage 3 and the value (or not) of this information. We have some significant plans to share with you on that front and would really welcome your feedback on what you'd find useful. This google form <https://forms.gle/AffURRfbMh8hbm46> can please be used to register interest should you wish to come.

We return to school for students on Tuesday 7th January 2020. Do please ensure that any issues with uniform and equipment are remedied, ready to make a strong start in the New Year. It just falls on me to wish you all a very happy, restful and enjoyable Christmas holiday. Thank you for your kind wishes, cards and emails, which I so appreciate. I'll be looking forward to the challenges and opportunities of 2020, but wish all students, staff and families a well-earned break in the meantime!

# Yateley School Parents' Bulletin

**Student Star of the week** As many will know, Isabelle Cole in 11NS has distinguished herself on many occasions for her academic prowess and accomplishments in school. Her reason for being chosen as the Christmas Student of the Week is not to do with academia – rather an excellent and kind character. Mrs Goldwater tells me that during the mock exam time – a stressful enough period for Year 11s - Isabelle was making her way to school along a pathway near Waitrose. Mrs Goldwater was walking to a doctor's appointment and found herself attending to an elderly lady who had fallen. Isabelle stopped to see if she could help and then very kindly went into Monteagle Surgery to let them know that Mrs Goldwater would be late to the appointment, also letting them know that the lady's husband would also be late and to ask them for some assistance. She also took the time to come back, check on everyone and let Mrs Goldwater know what had been done and asked if there was anything else she could do to help. What a community spirited, caring young lady!!



Yours sincerely

Paul German

Headteacher

## DIARY DATES

20<sup>th</sup> December

School Finishes at 12.45pm for Christmas holiday

6<sup>th</sup> January

INSET Day

7<sup>th</sup> January

Students return to school

## IDEAS FOR CHRISTMAS PRESENTS - Uniform and equipment, a friendly reminder!

### Shoes

We have started to see an increase in the number of students that are choosing to wear trainers to school. Please can we remind everyone that **trainers are NOT allowed** in school as part of the **RESPECTFUL** value ('Wear correct uniform'). **Students should be wearing leather school shoes.** The only reason for a student not to be in leather shoe shoes would be for medical reasons and there needs to be a professional medical note (**not a note from parents**) as evidence. If students decide to wear trainers after Christmas then we will be needing to address this with them, confiscate the trainers and issue the appropriate school sanctions. All details of our school uniform guidance can be found on the parents section of the VLE (please visit the link below). So if your son/daughter does not have a pair of leather school shoes then it is not too late for Father Christmas to deliver them in their stocking on Christmas Eve.



# Yateley School Parents' Bulletin

## Earphones

If your son/daughter has been particularly good this year, then on their Christmas list might be a pair of Bluetooth Earphones (like the Apple EarPods). **These type of Bluetooth Earphones are not allowed in school.** Students should not be wearing these wireless devices in their ears during the school day.

We have also had a few students lose them and these are very expensive items to be lost! Students are allowed to have a wired pair of earphones

In their bag if needed in certain lessons to use with the computers (but not at any other time around the school).

If students are seen with this type of Bluetooth earphone (or any earphones when not instructed to by a teacher in a lesson) they will be confiscated until parents can collect them and the appropriate school sanction issued. So please can we ask that you get your son/daughter to leave the Bluetooth Earphones at home.

## Uniform Guidance

[https://moodle.yateley.hants.sch.uk/pluginfile.php/26552/mod\\_page/content/117/Uniform%20Guidance.pdf](https://moodle.yateley.hants.sch.uk/pluginfile.php/26552/mod_page/content/117/Uniform%20Guidance.pdf)

## HOUSE DRAMA 2019

The penultimate week of term saw 4 exceptional House Drama performances which the students have been working on for 3 months. House Drama is a brilliant opportunity for our Sixth Form students to create an original script and piece of theatre based on a given stimulus. The students cast and direct their pieces with the assistance of Miss Tottman and Mrs Afleck-Cruise. The cast is comprised of pupils from the Yr7 to Yr10 and this year, Year 11 students have also chosen to support their House as Assistant



Directors (Bekah Musa, Zak Made and Molly Cole). The students have all worked exceptionally hard rehearsing at lunchtimes and after school. This year, the energy, drive and commitment shown by all involved to create the best piece of theatre possible has been exceptional. We are very proud of all involved and in particular:

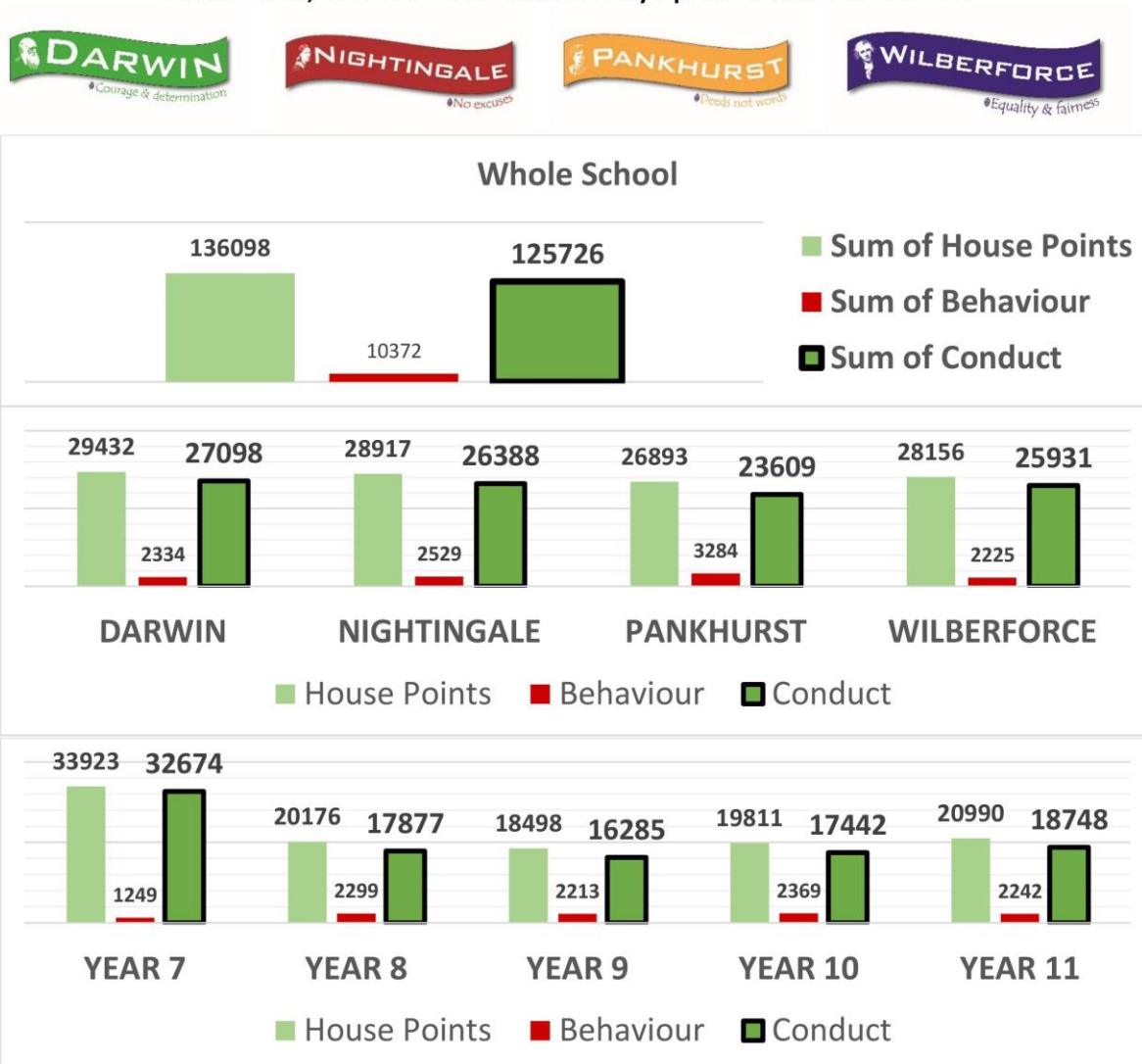
Grace Austin, Ryan Davies, Kian Heard, Kian Pritchard, Kimberly Nolan, Komal Gautam, Christina Cooke

Assisted by: Moira Rennie, Louis Saunders, Chloe Bradley-Turner, Freddie Lines and Ellie Park. The productions were superb and reflected all their hardwork. The originality of the script writing this year was also particularly impressive. Congratulations to Christina Cooke and Komal Gautam on leading Darwin's winning production.

*Miss Tottman, Head of Drama*

# Yateley School Parents' Bulletin

House Points, Behaviour & Conduct: Weekly Update 05.09.19 to 13.12.19



Please note that all Year 11 students were given 100 House Points at the start of Sep 2019 due to the new Prom Points initiative for Year 11 this year, and therefore why they have more than any other year group.

## Tutor Groups With The Highest Conduct Points (House Points – Behaviour)

Year 7	Year 8	Year 9	Year 10	Year 11
7DN	8DN	9WN	10WN	11NN

## Tutor Groups With The Highest Average Conduct Points (House Points – Behaviour)

Year 7	Year 8	Year 9	Year 10	Year 11
7DN	8DN	9NN	10PS	11WN

## House With The Highest Average Conduct Points (House Points – Behaviour)

Year 7	Year 8	Year 9	Year 10	Year 11	OVERALL
Darwin	Pankhurst	Nightingale	Pankhurst	Wilberforce	Wilberforce

Whole School Attendance: 96.06%

## Tutor Groups With The Highest Attendance

Year 7	Year 8	Year 9	Year 10	Year 11
7WS	8DS	9NS	10WS	11NN



Hampshire  
County Council



# Yateley School Parents' Bulletin

## Maths Corner 15



### Snail Problem



A snail creeps 6 ft up a wall during the daytime. After all the labour it does throughout the day, it stops to rest a while... but falls asleep!! The next morning it wakes up and discovers that it has slipped down 2 ft while sleeping. If this happens every day, how many days will the snail take to reach the top of a wall 54 ft in height?

**1 house point to all parents/students who presents the correct answer to their maths teacher before next weeks Maths Corner is published.**

**Answer to Maths Corner 14 – Estate Agent Problem**

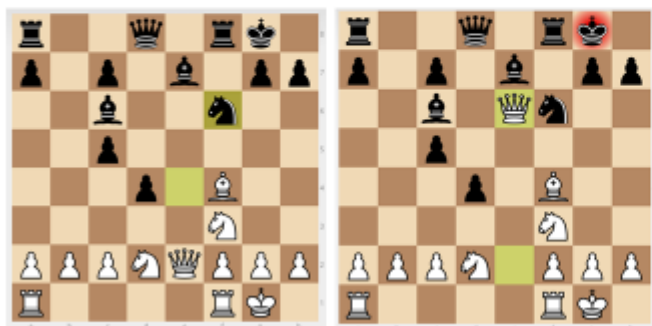
**£160000**



## Chess Puzzle



Last week's solution was another fork. White can win black's bishop by first attacking their king.



This week: find the best move for white.



Bring your solution to Chess Club on Thursdays at lunchtime in C21.



Hampshire  
County Council



# Yateley School Parents' Bulletin

## LOST PROPERTY

A reminder that students are responsible for their personal belongings. If a student loses an item they must take responsibility for finding any items they are missing. We have received a huge amount of lost property this term which has now become unmanageable. We are unable to store these items long term in the office. Moving forward next term any items that are unnamed will be donated to the PTA weekly. Named items will be returned to the owner. Please can parents ensure that all school uniform and sports clothing is named. If students lose an item of sports clothing, they are advised to re-check within the changing room area and then to review the lost property box in the sports office.

A tip we give students for when they get changed for PE is to ensure that they pack their items inside their bag to avoid items getting mixed up with another student's belongings. For all non-sport clothing/items, students are recommended to look in their previous classrooms, lockers and then the main office during break or lunch time. If the student has carried out the above search and is still unable to locate their item, they should then inform a member of sports staff or main office staff during break or lunchtime, who will then support them in carrying out a double check.



**NEW for 2020!**

**Slice of FSS**

*\* Cake included! \**



The Hart and Rushmoor Family Support Service presents

**Slice of FSS**

A **new** drop in session for professionals, where you can gain a better understanding about our courses, including new courses for 2020, ask questions about the free service and walk away with freebies.

**Wednesday 25<sup>th</sup> March 2020** - Drop in anytime between **10:00am till 13:00**

At Rushmoor Borough Council, Council Offices, Farnborough Road, Farnborough, GU14 7JU

Family Support Service Tel: **01252 814700 / 01252 796258**



Hampshire  
County Council

