

# Yateley School Parents' Bulletin

**Issue:** 3

**Date:** 5<sup>th</sup> October 2018



[www.yateleyschool.net](http://www.yateleyschool.net)



[admin@yateley.hants.sch.uk](mailto:admin@yateley.hants.sch.uk)



@yateleyschool



School Lane, Yateley  
GU46 6NW



@yateleyschool



(01252) 879222

**Learning together – Empowered for life.**

**Dear Parents**

## Open Mornings

As you are probably aware, there has been a huge flurry of activity around our open events, with the Open Evening last week and the two Open Mornings this week. There have been comfortably over 700 people visiting the school and the feedback has been amazing. The level of interest stretches far and wide and I have been extremely proud of our school community throughout. Staff and students have been superb and I would like to thank them all.

Thanks to parents too for your help, lifts to events and generally for your support in the community. Many prospective parents have concluded their visits by complimenting the student tour guides who are such superb ambassadors for our school.



## Sixth Form Open Evening.

This hugely important event will take place on Thursday 11<sup>th</sup> October starting at 7pm. The talks (taking place in DS1) are at 7:15, 8:00 and 8:45. This evening will be vital for all of our Year 11 students and families and I look forward to seeing you. I'm also looking forward to welcoming prospective students from other local schools.

After all, we're unique in the area with our outstanding Sixth Form offer and class leading results on both attainment and progress. Come and take a look.

# Yateley School Parents' Bulletin

## Year 10 RS

Mr Bristow has ensured that all three of our Year 10 RS classes have got the chance to take a look at some of the variety of religious practice right here in Yateley. Students have enjoyed visits so far to both St Swithun's Catholic Church and as shown in the picture here to St Peter's Anglican Church. The students, of course have been excellent and we're very grateful for the hospitality from the churches.



## Elevate Education Parent Session

Many thanks to all those Year 11 parents that attended the Elevate Education seminar last night. Parents found it a useful seminar about the work Elevate Education will do with Year 11 this year in preparing them for exams and study, along with giving parents useful tips, guidance and information to help support at home.

The presentation from last night can be found on the parent area of our VLE at the below address:

- Elevate Page – <https://moodle.yateley.hants.sch.uk/mod/page/view.php?id=37876>
- Parent Seminar - [https://moodle.yateley.hants.sch.uk/pluginfile.php/61993/mod\\_page/content/4/PowerPoint%20-%20Parent%20Seminar%202018%20%28UK%29%20%281%29.pptx](https://moodle.yateley.hants.sch.uk/pluginfile.php/61993/mod_page/content/4/PowerPoint%20-%20Parent%20Seminar%202018%20%28UK%29%20%281%29.pptx)
  - Slide 16 of the presentation gives parents details of the Elevate Education website and student portal (<https://ukstudent.elevateeducation.com/>) which can be accessed for further resources.
  - Slide 17 provides details of the downloadable parent ebook ([eepurl.com/djMpeD](http://eepurl.com/djMpeD)) with further advice and guidance in how to support your child through Year 11 and their studies

## STUDENTS OF THE WEEK



Congratulations to our new Year 7s on the start of their Yateley School Journey. Not only have they had to get used to a new school; new routines; new lessons; learn to be super organised; meet new people; but we've also asked them to audition for main school production, house drama, rock challenge and invited them to take part in House Dance. We've also asked them to take on student leadership responsibilities in becoming sports representatives and house council members. The list is endless! They've risen to the challenges magnificently. Well done to you all.

Students - Emily Thatcher, Ivan Donchev, Brook Palmer, Alexandra Rae, Cameron Sharman, Zoe Boorman, Dilly Amarasuriya, Luke Bird, Alfie Taplin, Evan Price, Molly Jacobs, Givamia Thambe, Max Cannon, Dan Barker, Sophie Heard, Amelia Double, Ben Ware and Jacob Russell



Hampshire  
County Council



# Yateley School Parents' Bulletin

## Winter Uniform

Please can all parents be aware that as of Monday 8<sup>th</sup> October, all students should now be in winter uniform for school. Therefore polo shirts are not allowed.

For further details of the uniform guide and policy please follow the link on the VLE or check your child's planner. In particular please read the guidance on footwear, jumpers and coats due to the cold months ahead.

[https://moodle.yateley.hants.sch.uk/pluginfile.php/49114/mod\\_page/content/23/Uniform%20Guidance.pdf](https://moodle.yateley.hants.sch.uk/pluginfile.php/49114/mod_page/content/23/Uniform%20Guidance.pdf)

## Diary Dates

<b>11<sup>th</sup> October</b>	Sixth Form Open Evening – 7pm
<b>12<sup>th</sup> October</b>	Yr 12 Thorpe Park Trip
<b>15<sup>th</sup> October</b>	Scholastic Book Fair (Mon – Thurs in the library)
<b>17<sup>th</sup> October</b>	House Dance – 7pm
<b>18<sup>th</sup> October</b>	House Dance /Judging Night – 7pm
<b>22<sup>nd</sup> October</b>	Half Term Week
<b>29<sup>th</sup> October</b>	INSET Day
<b>1<sup>st</sup> November</b>	Yr 7 Tutor/Parent Evening

---

## Reply Slip – House Dance Tickets (Please Return to Reception)

<b>Name</b>		<b>Form</b>	
-------------	--	-------------	--

	Please indicate the number of tickets required below at £5 each	
Performance Date	Wednesday 17 <sup>th</sup> October	Thursday 18 <sup>th</sup> October



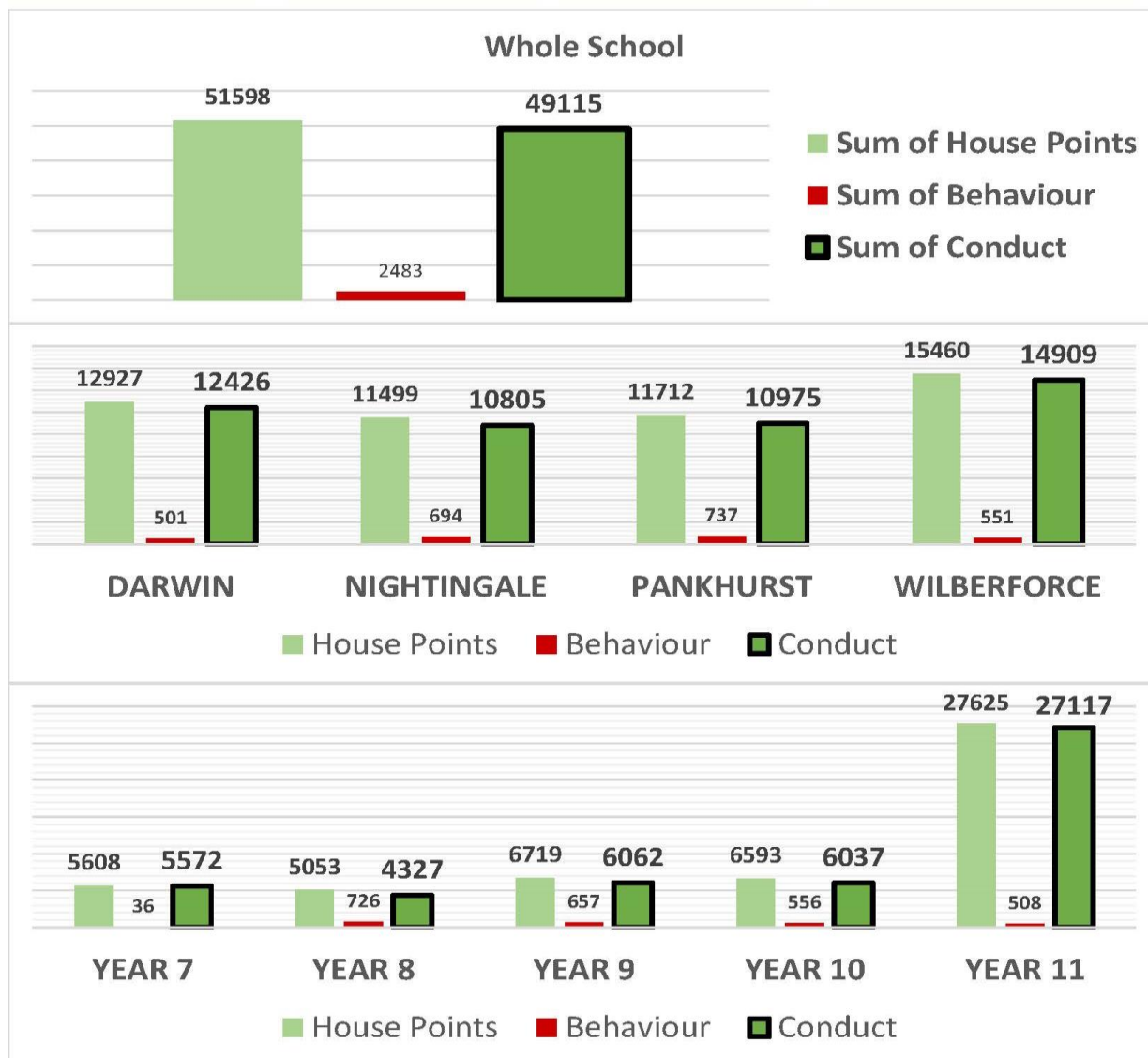
Hampshire  
County Council





# Yateley School Parents' Bulletin

House Points, Behaviour & Conduct: Weekly Update 05.09.18 to 28.09.18



Please note that all Year 11 students were given 100 House Points at the start of Sep 2018 due to the new Prom Points initiative for Year 11 this year, and therefore why they have more than any other year group.

## Tutor Groups With The Highest Conduct Points (House Points – Behaviour)

Year 7	Year 8	Year 9	Year 10	Year 11
7DN	8WN	9WN	10WN	11WN

Whole School Attendance: 96.82%

## Tutor Groups With The Highest Attendance

Year 7	Year 8	Year 9	Year 10	Year 11
7PN	8NS	9WN	10WN	11WN



Hampshire  
County Council



# Yateley School Parents' Bulletin

## House Dance Show

**Wednesday 17<sup>th</sup> and Thursday 18<sup>th</sup> October 2018**

The House Dance show will take place on Wednesday 17<sup>th</sup> and Thursday 18<sup>th</sup> October at 7.00pm in the Main Hall. This is an extremely popular event and tickets sell out quickly. They will be sold on a first come, first served basis and will cost £5 each and be sent out via your child's register. The show consists of the four House Dance teams showcasing their pieces led by Student Captains based on the theme 'London's Past'. We will also have performances from GCSE and BTEC Dance students as well as student's own choreography. This is a show not to be missed!

If you require tickets, please complete the reply slip at the end of the bulletin and return it with your payment (cheques made payable to Yateley School) to reception marked for the attention of Mrs Ellis. Please note there is no online facility for paying for this event.

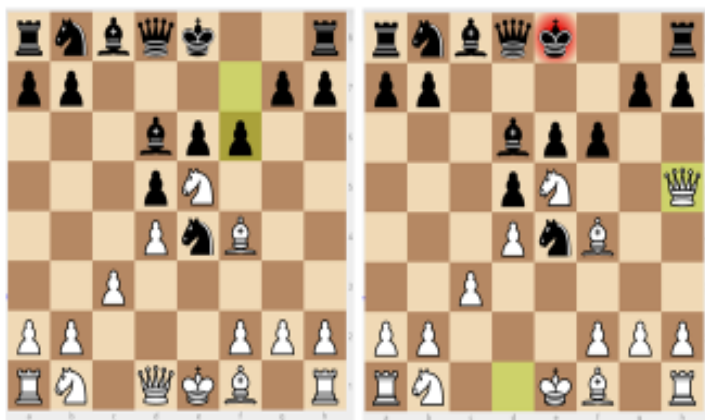
*Mrs K Ellis, Front of House*



## Chess Puzzle



Last week's solution was bring out the queen, placing the king in check. The defence of this by black costs them their rook, only costing white a knight.



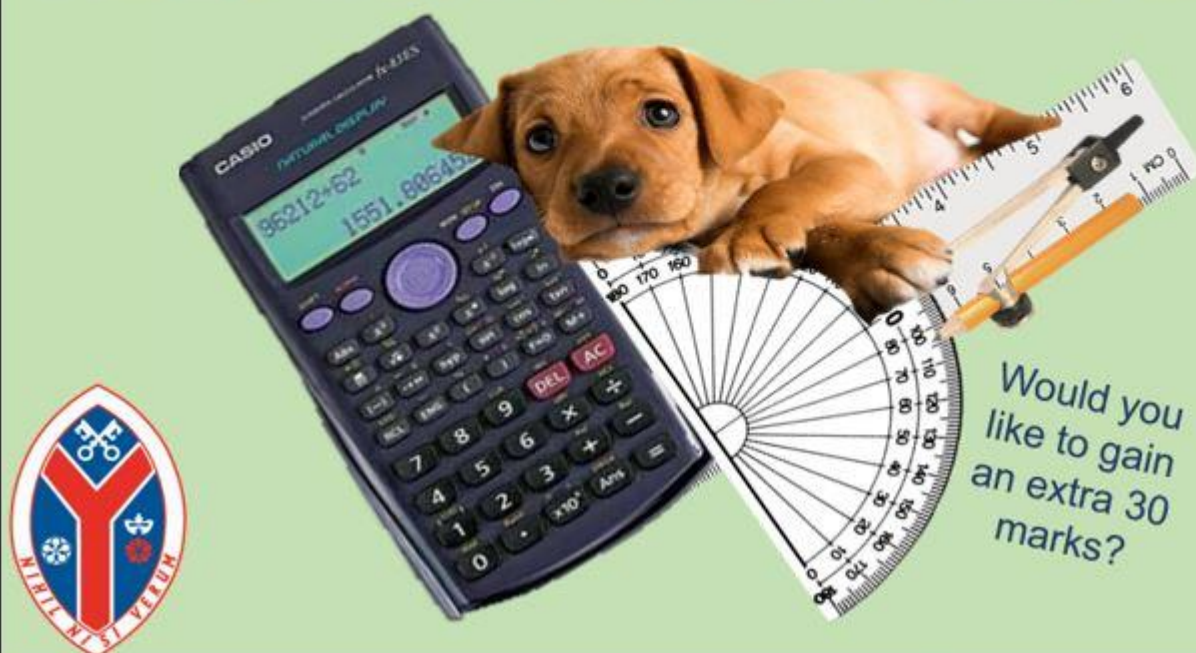
This week: find the best move for white.



Bring your solution to Chess Club on Thursdays at lunchtime in C21.

# Yateley School Parents' Bulletin

## Year 11 Maths Homework/Period 7 Timetable



### Year 11 Homework Schedule

Homework help is available  
Wednesday in C2.7 from 3:15

### Year 11 Revision Sessions

Wednesday in C2.5 3:15-4:00pm

Date	Topic	Date	Topic
12 <sup>th</sup> Sept	Factors/Powers/Roots	12 <sup>th</sup> Sept	
19 <sup>th</sup> Sept	Fractions	19 <sup>th</sup> Sept	Using your Calculator
26 <sup>th</sup> Sept	Measures & Estimations	26 <sup>th</sup> Sept	Number Skills
3 <sup>rd</sup> Oct	Algebra 1	3 <sup>rd</sup> Oct	Factors/Powers/Roots
10 <sup>th</sup> Oct	Algebra 2	10 <sup>th</sup> Oct	Fractions
17 <sup>th</sup> Oct	Sequences	17 <sup>th</sup> Oct	Measures & Estimations

Year 11 **Drop-in** is also available every Wednesday in C2.1 from 3:15pm for anyone who wants help with any GCSE Maths topics.

**Everyone welcome - Learning together – Empowered for life**



Hampshire  
County Council





# Yateley School Parents' Bulletin

## Years 12 & 13 Maths Booster Sessions 2019



### Year 12 Revision Sessions with Mrs Weakley Wednesday in C2.4 3:20-4:00pm

Date	Topic
12 <sup>th</sup> Sept	Indices Booster 1
19 <sup>th</sup> Sept	Indices Booster 2
26 <sup>th</sup> Sept	Algebra Booster 1
3 <sup>rd</sup> Oct	Algebra Booster 2
10 <sup>th</sup> Oct	Algebra Booster 3
17 <sup>th</sup> Oct	Algebra Booster 4

### Year 13 Revision Sessions with Mr O'Neill Wednesday in C2.2 3:20-4:00pm

Date	Topic
12 <sup>th</sup> Sept	
19 <sup>th</sup> Sept	Functions (Chapter 2)
26 <sup>th</sup> Sept	Transformations (Chapter 3)
3 <sup>rd</sup> Oct	Sequences/Series (Ch 4)
10 <sup>th</sup> Oct	Partial Fractions (Ch 5)
17 <sup>th</sup> Oct	Radians (Chapter 7)

**Year 12 and 13 Drop-in** available every **Wednesday in C2.6 from 3:20pm** for anyone who wants help with any Maths topics.

**Everyone welcome - Learning together – Empowered for life**



Hampshire  
County Council



# Yateley School Parents' Bulletin

## Maths Corner 4

### Flag up a problem!



A vertical flag pole is 12 metres long. The flag pole is secured by several wires which extend from the top of the pole to the ground. The wires are each attached to the ground 5 metres away from the base of the pole. Calculate the length of each wire.

**1 house point to all parents/student who presents the correct answer to their maths teacher before next weeks Maths Corner is published.**

**Answer to Maths Corner 3 – Monkeys and Bananas**  
**(1) 8 Minutes, (2) 8 Monkeys**

## VACANCIES

### Spanish Teacher (French KS3) – Full Time – January 2019

Closing date: Monday 15th October 2018

Interviews: w/c 15th October 2018

Contract: Permanent

Hours of Work: Full Time

Salary Type: MPR/UPR

We are seeking to appoint an enthusiastic and dynamic member of staff to join our highly successful Languages Department from January 2019 onwards (or sooner if available). This is an excellent opportunity for someone who is a talented and passionate teacher of Languages. The successful candidate will be able to teach Spanish across all key stages and French to KS3, be motivated and committed to working as part of a team, have strong up-to-date subject knowledge and be committed to ensuring students in their care make exceptional progress. This is an excellent opportunity for someone to join a team which is forward-thinking and focused on doing the very best for each and every student. In return the school can offer excellent up to date resources and professional development. Please note that should the school receive sufficient candidates for this role we reserve the right to close the advert sooner than the closing date stated. We therefore ask that if you are interested in this role please do apply as soon as possible.

**For further details, and to request an application pack, please email**  
**[beverley.elder@yateley.hants.sch.uk](mailto:beverley.elder@yateley.hants.sch.uk)**



Hampshire  
County Council





# Yateley School Parents' Bulletin

## **Business Studies Teacher – Full Time**

Closing date: Friday 15<sup>th</sup> October 2018

Interviews: w/c 15th October 2018

Contract: Permanent

Hours of Work: Full Time

Salary Type: MPR/UPR

The Business Department incorporates the following subjects:

GCSE Business

Level 3 BTEC National in Business and Travel and Tourism.

BTEC Specialist Courses in Business Administration and Travel Services.

A level Business.

Teaching takes place in a suite of four purpose built rooms located around a central open area. Each room is equipped with networked PCs. A video projector is available in each room linked to the teachers PC. The department has a wide range of resources including books, DVDs, networked computer software and magazines.

## **Person Specification**

We are looking for an enthusiastic and imaginative teacher who can show:-

- Evidence of successful classroom teaching and management.
- Enthusiasm for the areas we teach and for teaching plus a strong desire to make progress in the teaching profession.
- Competency in the use of ICT
- A professional approach to colleagues, students and parents
- Familiarity with recent developments in teaching
- Willingness to contribute to extra-curricular activities and trips

Applications from newly qualified teachers are welcomed. There will be a full induction programme for NQTs and all new staff are able to join the relevant sessions of this programme.

Resources and information about schemes of work will be made available to the person appointed to enable them to become familiar with the course.

The successful candidate will be expected to teach GCSE Business, BTECs in Business and Travel and Tourism and may contribute towards A Level Business teaching

**For further details, and to request an application pack, please email**

**[beverley.elder@yateley.hants.sch.uk](mailto:beverley.elder@yateley.hants.sch.uk)**



Hampshire  
County Council



# Yateley School Parents' Bulletin

## Science Technician

Closing date: Friday 12th October 2018

Interviews: w/c 15th October 2018

Contract: Permanent, Term-time only (5 days per week / 40 weeks per year)

Hours of Work: 26 hours per week

Salary Type: EHCC/ Support Staff

Salary Details: To be confirmed at time of interview

Yateley is a successful 11-18 comprehensive school.

We are looking to recruit an enthusiastic Science Technician to join our busy Science department. The successful candidate will work under the direction of the Senior Technician to support delivery of high quality teaching and learning by meeting the practical requirements of the Science curriculum. They must be organised, flexible, have the capacity to work well within a team and have good ICT skills. Previous experience in a laboratory environment is desirable as is a qualification in Science and knowledge of chemical handling.

Currently our technician team consists of 3 part time technicians and one senior technician all of whom have a wide range of experience. The department itself is housed in a purpose built block with 10 laboratories and 3 prep room.

**For further details, and to request an application pack, please email**  
**[beverley.elder@yateley.hants.sch.uk](mailto:beverley.elder@yateley.hants.sch.uk)**

## Cover Supervisor

Part Time 3 Days Week £8.93 per hour

Start Date Immediately

Closing Date for applications – Monday 15th October 12.00 Noon

This role is an excellent opportunity for someone who has experience working with students, in order to gain Secondary School awareness. Alternatively, you may be a Teacher looking for a position which will not require planning, marking and assessment.

Applications are welcome from those who have a good standard of education and have proven communication and organisational skills. Applicants must have a sense of humour, be confident and be adaptable to the changing needs of work colleagues. Applicants must be able to work under pressure, independently and have a firm but non- confrontational approach towards discipline. Experience in classroom management and any presentation skills are an advantage. The successful applicant will receive a comprehensive Induction and Continuous Professional Development Programme. This would be an ideal opportunity for someone who is considering a career in teaching or someone who is searching for a rewarding position in the support of a young person's education.

**For further details, and to request an application pack, please email**  
**[beverley.elder@yateley.hants.sch.uk](mailto:beverley.elder@yateley.hants.sch.uk)**



Hampshire  
County Council

